

UPS ONLINE MONOFÁSICO 1-3KVA RT



CARACTERÍSTICAS

- Diseño Rack / Tower
- Tecnología de doble conversión en línea de alta frecuencia
- Tecnología de control DSP (procesadores de señal digital)
Corrección activa del factor de potencia (APFC), factor de potencia de entrada hasta 0,99
- Factor de potencia de salida 0.9
- Amplio rango de voltaje de entrada (110V-300Vac) y rango de frecuencia (40-70Hz)
- Conversión de frecuencia de 50/60 HZ

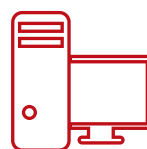
APLICACIONES

SOLUCIONES PARA

- ✓ Cortes de Energía / Apagones (Blackout)
- ✓ Baja tensión momentánea / Micro-cortes
- ✓ Bajadas de Tensión Sostenida
- ✓ Sobre Voltaje / Subidas de Tensión
- ✓ Ruido Eléctrico
- ✓ Transitorios o micro-cortes
- ✓ Picos de tensión / alto voltaje momentáneo



Comercio, oficinas
y Pymes



Computadoras y
periféricos



CCTV

ESPECIFICACIONES TÉCNICAS

MODEL	KTPE901PS RT	KTPE901PH RT	KTPE902PS RT	KTPE902PH RT	KTPE903PS RT	KTPE903PH RT		
Capacity	1 kVA / 900 W		2 kVA / 1800 W		3 kVA / 2700 W			
INPUT								
Rated voltage	208 / 220 / 230 / 240 Vac							
Voltage range	110 ~ 176 Vac (linear derating between 50% and 100% load); 176 ~ 280 Vac (no derating); 280 ~ 300 Vac (derating 50%)							
Frequency	40 ~ 70 Hz (auto-sensing)							
Power factor	≥ 0.99							
Bypass voltage range	-25% ~ +15% (settable)							
Total harmonic distortion (THDi)	≤ 6%							
OUTPUT								
Voltage	208 / 220 / 230 / 240 Vac (settable via LCD)							
Voltage regulation	± 1%							
Frequency	45 ~ 55 Hz or 55 ~ 65 Hz (synchronized range); 50 / 60 Hz ± 0.1 Hz (battery mode)							
Waveform	Sinusoidal							
Power factor	0.9							
Total harmonic distortion (THDv)	≤ 2% (linear load); ≤ 5% (non-linear load)							
Crest factor	3:1							
Overload	105% ~ 125% for 1 min, 125% ~ 150% for 30 s, > 150% for 300 ms							
BATTERIES								
DC voltage	24 V (S)	36 V (S)	36 V (H)	48V (S)	72 V (S)	72 V (H)	72 V (S)	96 V (H)
Inbuilt battery	2 × 9 Ah	3 × 7 Ah	/	4 × 9 Ah	6 × 7 Ah	/	6 × 9 Ah	/
Charging current (max.)	1 A		6 A	1 A		6 A	1 A	6 A
Recharger time	Standard model: 90% capacity restored in 3 hours; Long time model: depend on the capacity of battery							
SYSTEM								
Efficiency	≥ 90% (Mains mode)		≥ 91% (Mains mode)		≥ 92% (Mains mode)			
	≥ 85% (Battery mode)		≥ 86% (Battery mode)		≥ 87% (Battery mode)			
	≥ 95% (ECO mode)		≥ 96% (ECO mode)		≥ 97% (ECO mode)			
Transfer time	Mains mode to battery mode: 0 ms Inverter mode to bypass mode: 4 ms (typical)							
Protections	Short-circuit, overload, overtemperature, battery discharge protection and fan testing protection							
Communications	RS232 (standard), USB / RS485 / dry contacts / SNMP (optional)							
Display	LCD + LED							
Standards	EN 62040-1, EN 62040-2, EN 61000-3-2, EN 61000-3-3, IEC 61000-4-2, IEC 61000-4-3, IEC 61000-4-4, IEC 61000-4-5, IEC 61000-4-6, IEC 61000-4-8, IEC 61000-4-11, IEC 61000-2-2, IEC 62040-2, IEC 62040-1							
OTHERS								
Operating temperature	0°C ~ 40°C							
Storage temperature	-25°C ~ 55°C (without batteries)							
Relative humidity	0~95% (non-condensing)							
Altitude	≤ 1000 m, derating 1% for each additional 100 m							
IP rating	IP 20							
Noise level at 1m	≤ 50 dB							
Dimensions (W × D × H) (mm)	440 × 338 × 88	440 × 444 × 88	440 × 468 × 88	440 × 528 × 88	440 × 728 × 88	440 × 468 × 88	440 × 728 × 88	440 × 468 × 88
Packaged dimensions (W × D × H) (mm)	545 × 485 × 201	545 × 568 × 201	545 × 592 × 201	545 × 652 × 201	545 × 852 × 201	545 × 592 × 201	545 × 852 × 201	545 × 592 × 201
Net weight(kg)	12.3	15.8	7.6	21.9	27.2	9.7	30.6	10.1
Gross weight(kg)	14.3	18.9	11.1	25.5	31.3	13.2	34.0	13.6

●Derate capacity to 70% in CUCF mode and to 90% when the output voltage is adjusted to 208 Vac.
●S means standard model, H means long time model.

●All specifications are subject to change without notice.
●Custom-made specifications are acceptable.

Versión con baterías internas standard, y sin baterías internas, con cargador más grande